



CALIFORNIA AMERICAN WATER
COMMENTS – SWRCB STAFF REPORT
RE: APPLICATION TO MODIFY CEASE
AND DESIST ORDER WR 2009 - 0060

July 19, 2016

REQUESTED CHANGES TO THE STAFF REPORT



CARRYOVER CREDITS

Up to 750 af total without cap, even if it results in EDL > 8310 afa



JOINT ANNUAL REPORT

Reporting should start with second milestone

CDO COMPLIANCE CHECKLIST

- ☒ Implement actions to terminate unauthorized Carmel River diversions
- ☒ Annual reductions in river diversions
- ☒ Additional reductions in diversions based on new water from ASR, Sand City
- ☒ Implement additional small projects to reduce river diversions
- ☒ Implement projects to mitigate impacts of diversions
- ☒ Cease river diversions for new service connections, increased uses
- ☒ Quarterly reports to SWRCB
- ☒ Quarterly reports on website
- ☒ **Terminate all unauthorized diversions by December 31, 2016**

DIVERSIONS UNDER CDO LIMIT EACH YEAR

ACRE FEET



EFFORTS TO REDUCE DIVERSIONS

- **MONTEREY PER CAPITA CONSUMPTION IS 56.6 GPCD**
Compared to statewide avg of 86.8 gpcd
- **\$1.5 MILLION SPENT ANNUALLY ON CONSERVATION**
Rebates, turf replacements, irrigation technology, public outreach
- **CONTINUING 8 PERCENT REDUCTION TARGET**
Even as drought cutback order is lifted
- **TPL FORBEARANCE AGREEMENT**
In-stream dedication approximately 300 afa
- **EASTWOOD TRUST (MALPASO) WATER RIGHTS**
46 afa in-stream use. 85.6 afa community benefit/offset Cal Am diversions
- **INTELLIGENT METERING PILOT**
Customers monitor water use in near real time. Model for other regions. Rollout 2018-2020
- **SAND CITY DESALINATION**
300 afa production. \$11.9 million plant; startup in 2010.
- **SIGNIFICANT INVESTMENT IN ASR**
Collaboration with MPWMD; wells 3 and 4 added.

CAPITAL EXPENDITURES

Pipelines	\$39.1 Million
Services	\$6.3 Million
Pump Stations	\$3.3 Million
Storage Tanks	\$8.4 Million
Meter Installation	\$3.1 Million
ASR Wells	\$7.9 Million
SCADA	\$1 Million

TOTAL **\$69.1 Million**

SYSTEM IMPROVEMENTS

2009-2015



WATER DEMAND MANAGEMENT



Municipal Water Efficiency

- **Landscape grant program**
- **School retrofits**



Non-Residential Water Efficiency

- **Commercial-Industrial audits**
- **Towel linen reuse program**
- **Commercial-Industrial rebates**



Residential Water Efficiency

- **Water wise house calls**
- **Appliance & landscape rebates**
- **Ranked top quartile in customer satisfaction by JD Powers**



Conservation Education

- **Water waste reporting app**
- **In-school education program**
- **Rainwater & Greywater classes**
- **Community gardens & events**



SAN CLEMENTE DAM REMOVAL

Largest dam removal in state history. Rerouted river and restored vital habitat.



LOS PADRES DAM

Installed a \$5.3 million state-of-the-art fish passage system at the dam. Currently studying long-term plans.



NOAA MITIGATION

Funded \$11.2 million in NOAA mitigation to date for Carmel River restoration work.



FISH RESCUES

Continue to support ongoing rescue program.

A photograph of the San Clemente Dam, a large concrete structure with a curved top and multiple spillways. The sun is shining through the center of the dam, creating a bright lens flare. The foreground shows a rocky riverbank with fallen leaves and some vegetation. The background is filled with trees with yellow and orange autumn foliage.

SAN CLEMENTE DAM REMOVAL

BEFORE

AFTER



LOS PADRES FISH PASSAGE

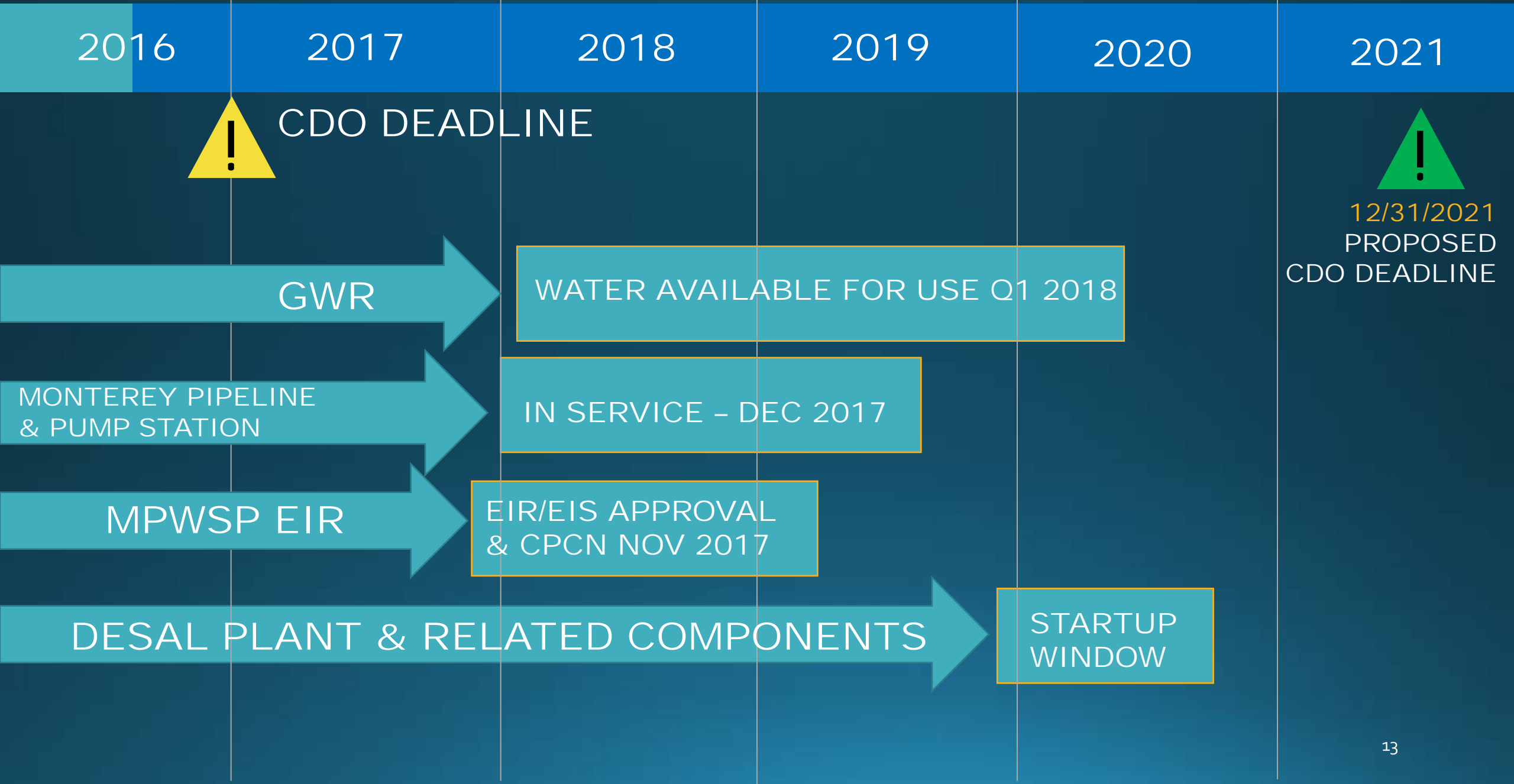


STATUS OF MONTEREY PENINSULA WATER SUPPLY PROJECT

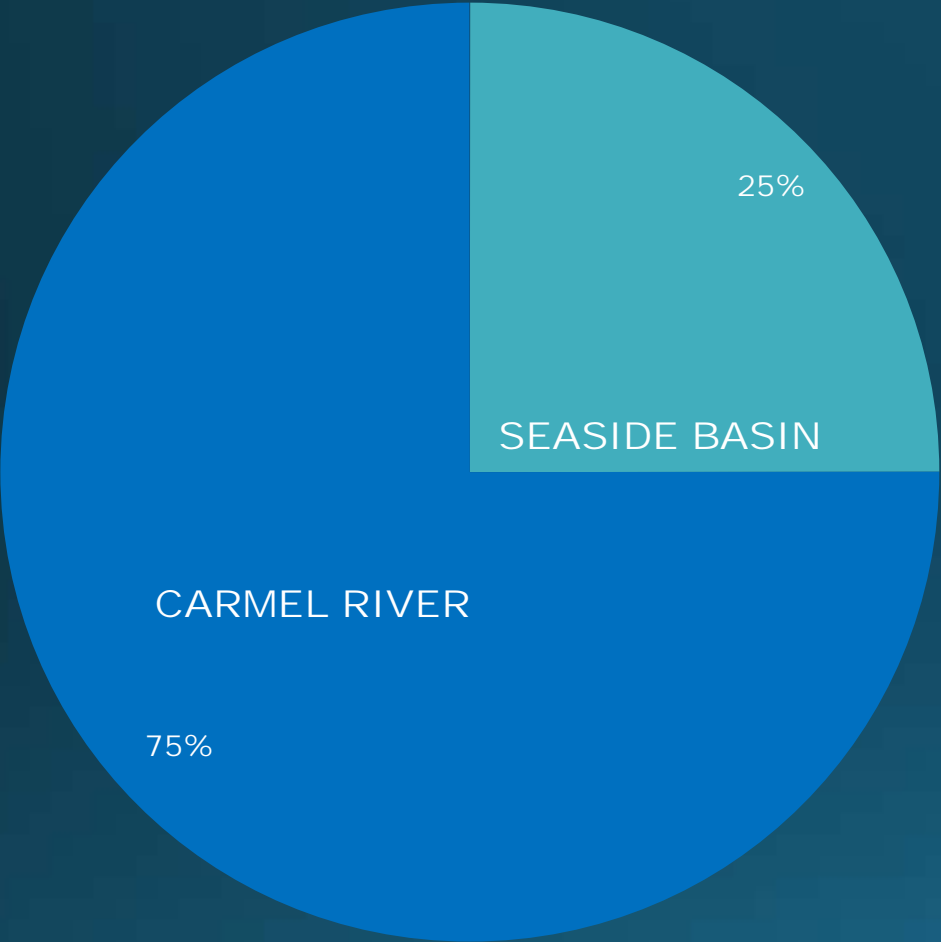
- Application filed with CPUC in 2012
- Environmental review began in 2012
- Test slant well began operation in April 2015
- Settlements reached:
 - **Comprehensive (2013)**
 - **Plant size and level of operation (2013)**
 - **Desalination plant return water (2016)**
 - **Brine discharge and salinity monitoring (2016)**
- Construction contracts in place for all major desal components
- Ready to proceed upon CPUC completion of environmental review & CPCN
- Approval of GWR Water Purchase Agreement and pipeline/pump station expected in August
- Pipeline and pump station have secondary benefit of increasing ASR yield up to 1,000 AFA



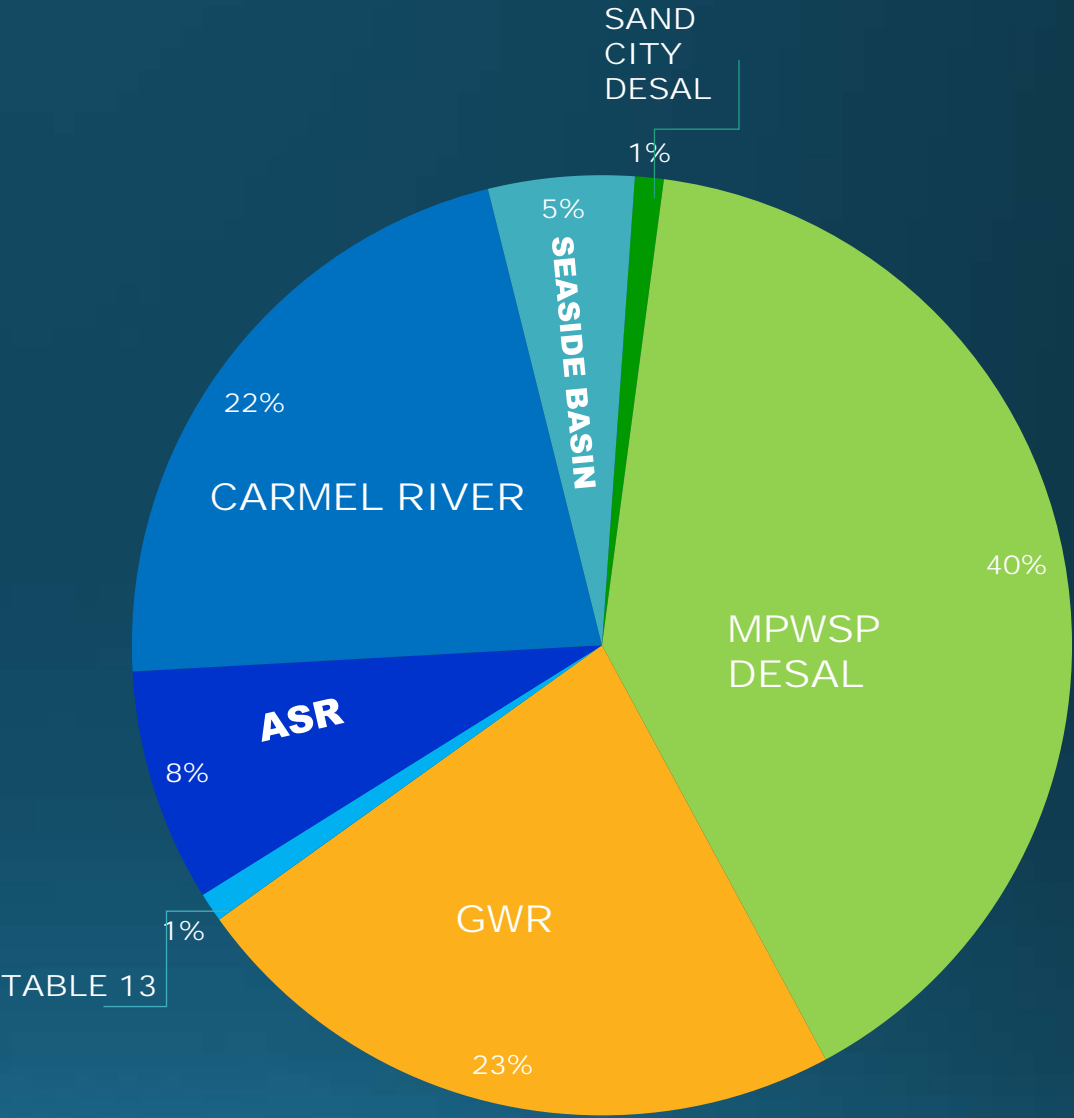
MPWSP ANTICIPATED PROJECT SCHEDULE



WATER SUPPLY DIVERSIFICATION



HISTORIC SOURCES
before 1995



FUTURE SOURCES*
est. 2020

*excludes Pacific Grove and Pebble Beach recycle projects

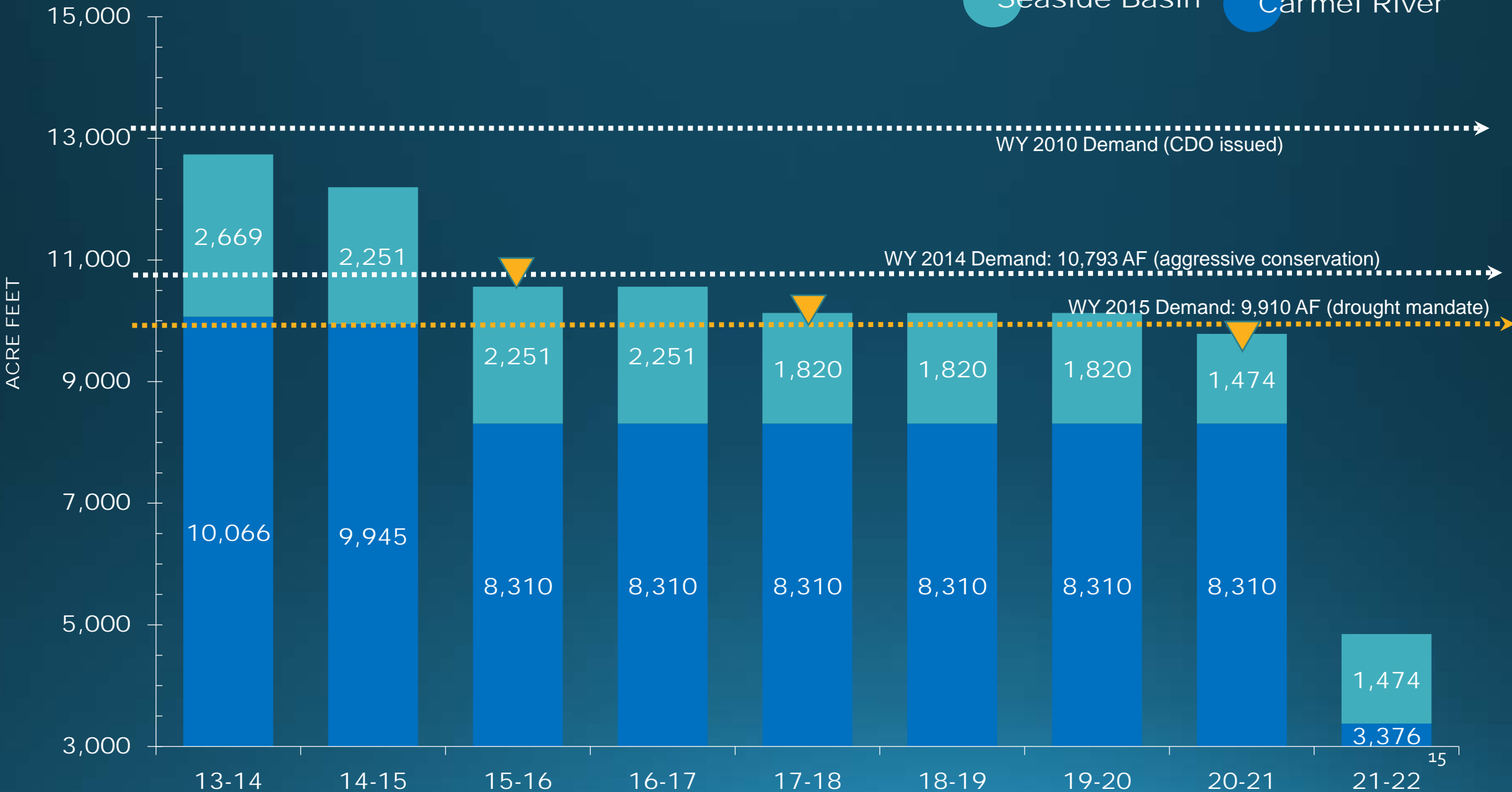


COMPARISON TO PROPOSED DIVERSION LIMITS

Seaside groundwater ramp-down events

Seaside Basin

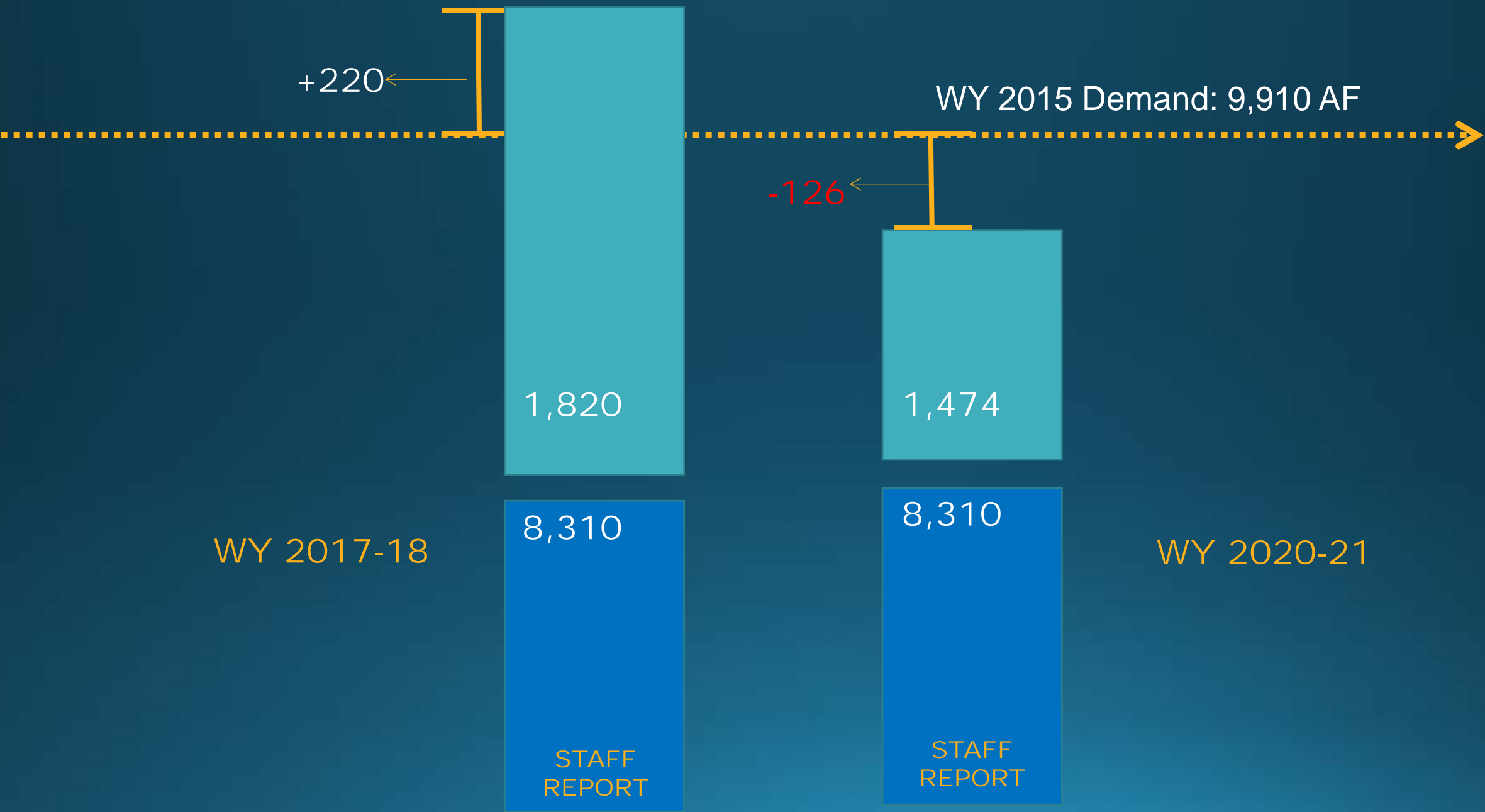
Carmel River



COMPARISON TO PROPOSED DIVERSION LIMITS
SWRCB Staff Report including Seaside Basin Limits

Seaside Basin

Carmel River



REQUESTED CHANGES TO THE STAFF REPORT



CARRYOVER CREDITS

Up to 750 af total without cap, even if it results in EDL > 8310 afa



JOINT ANNUAL REPORT

Reporting should start with second milestone

Cal Am wishes to thank the following parties for their significant efforts and collaboration in developing the Amended CDO:

- SWRCB Staff
- Monterey Peninsula Regional Water Authority
- Monterey Peninsula Water Management District
- Pebble Beach Company
- City of Pacific Grove
- Sierra Club
- Planning and Conservation League
- Carmel River Steelhead Association
- Quail Lodge
- Bernardus Lodge
- Carmel Valley Ranch Resort



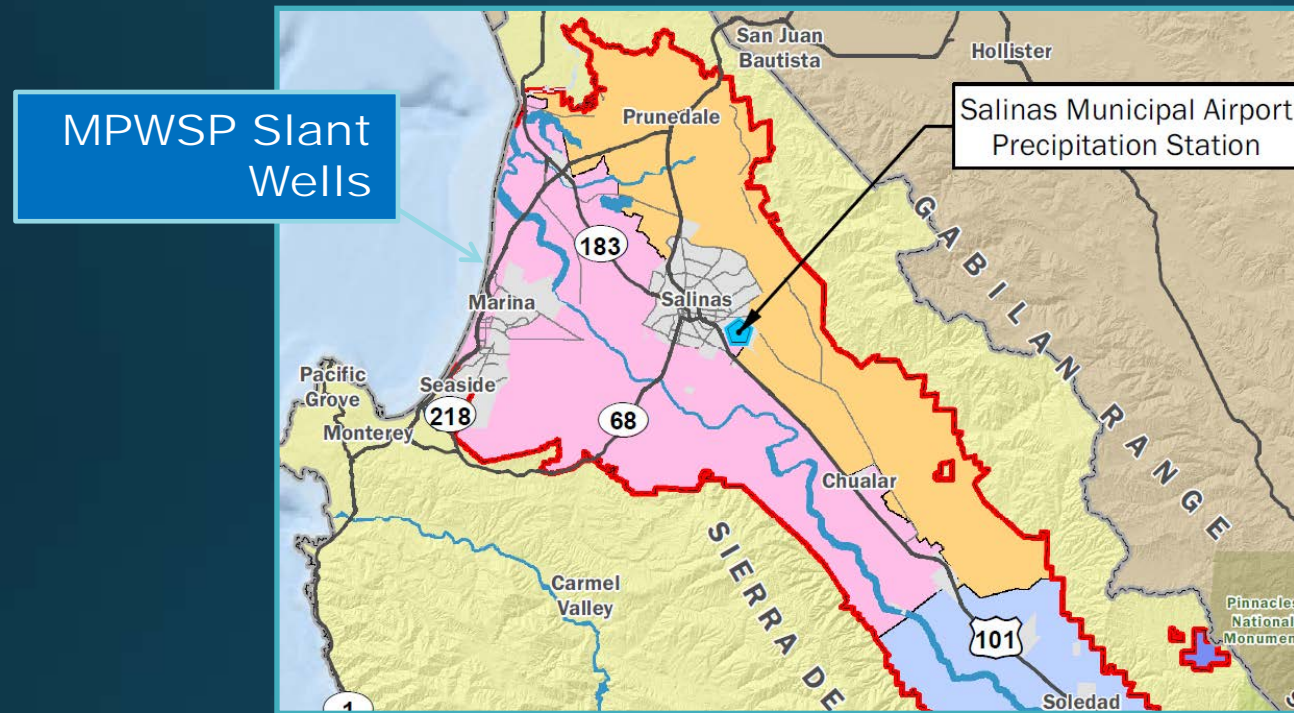
CALIFORNIA
AMERICAN WATER

APPENDIX

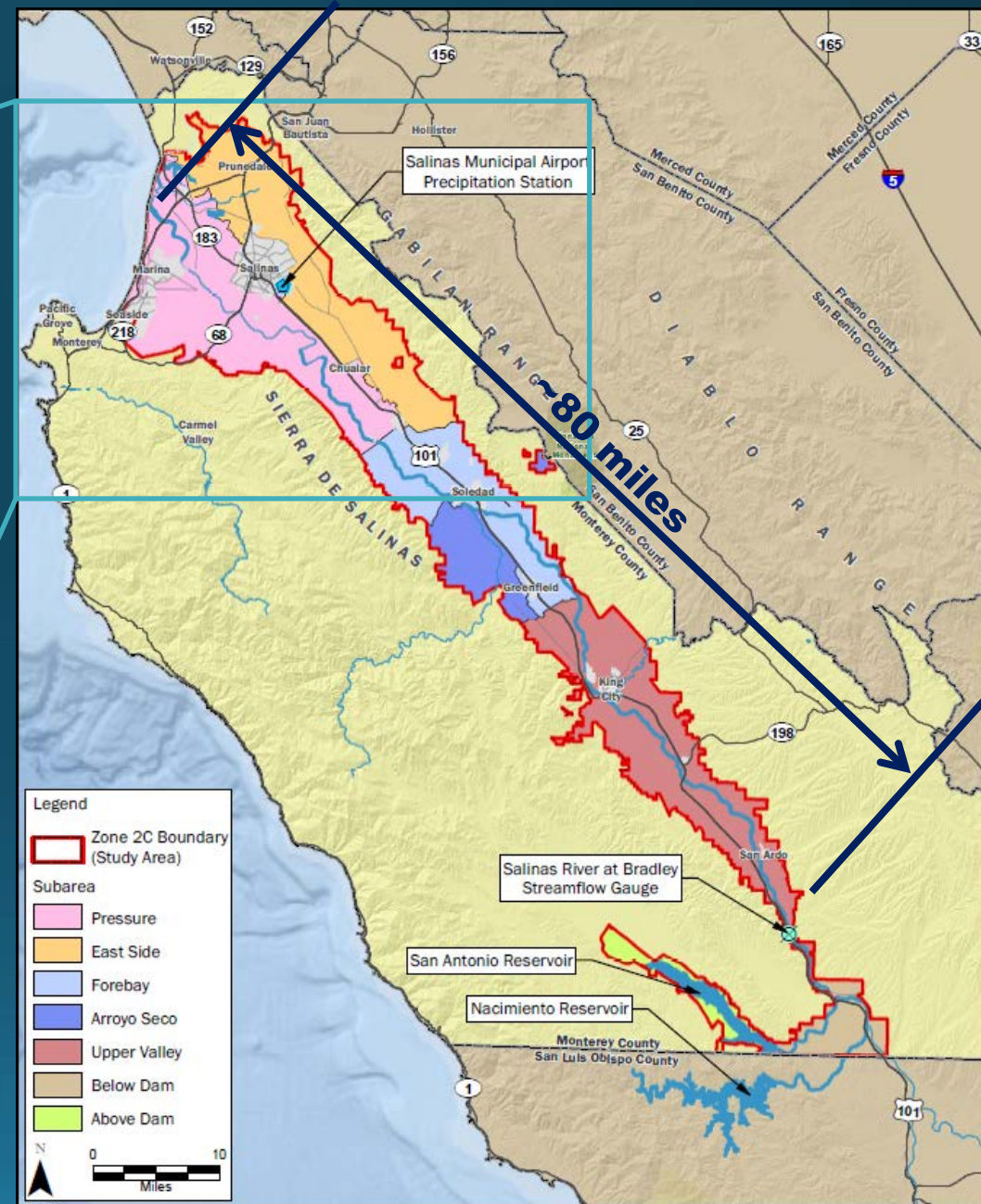
MONTEREY SYSTEM MAP



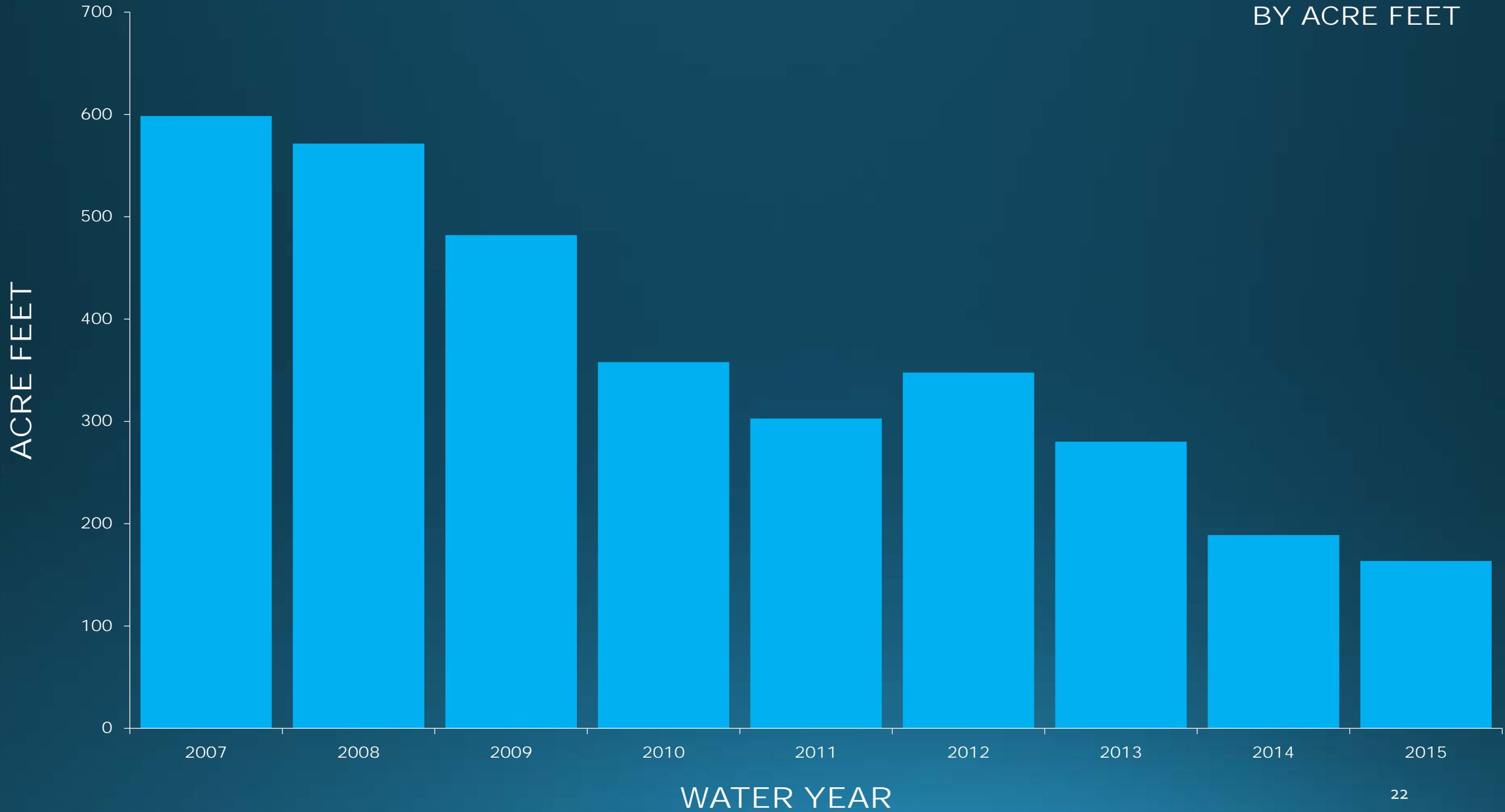
SALINAS VALLEY GROUNDWATER BASIN



- Basin is 80+ miles long from Bay to Bradley Gauge
- Overall Storage in Zone 2C is 16.4 million acre-feet
- Average GW extraction In Zone 2C from 1959 to 2013 is 523,000 acre-feet per year (AFY).
- MPWSP proposes to extract not more than 27,000 AFY at the Cemex site on Monterey Bay of which is 4% is expected to be brackish Basin Water.
- This is 0.2% of the current annual GW withdrawal rate.



TIER 5 CONSUMPTION BY ACRE FEET



NON-REVENUE WATER

